



ship2me's peak and Christmas operation information 2024



t: 616 561

e: customer.service@ship2me.co.uk

www.ship2me

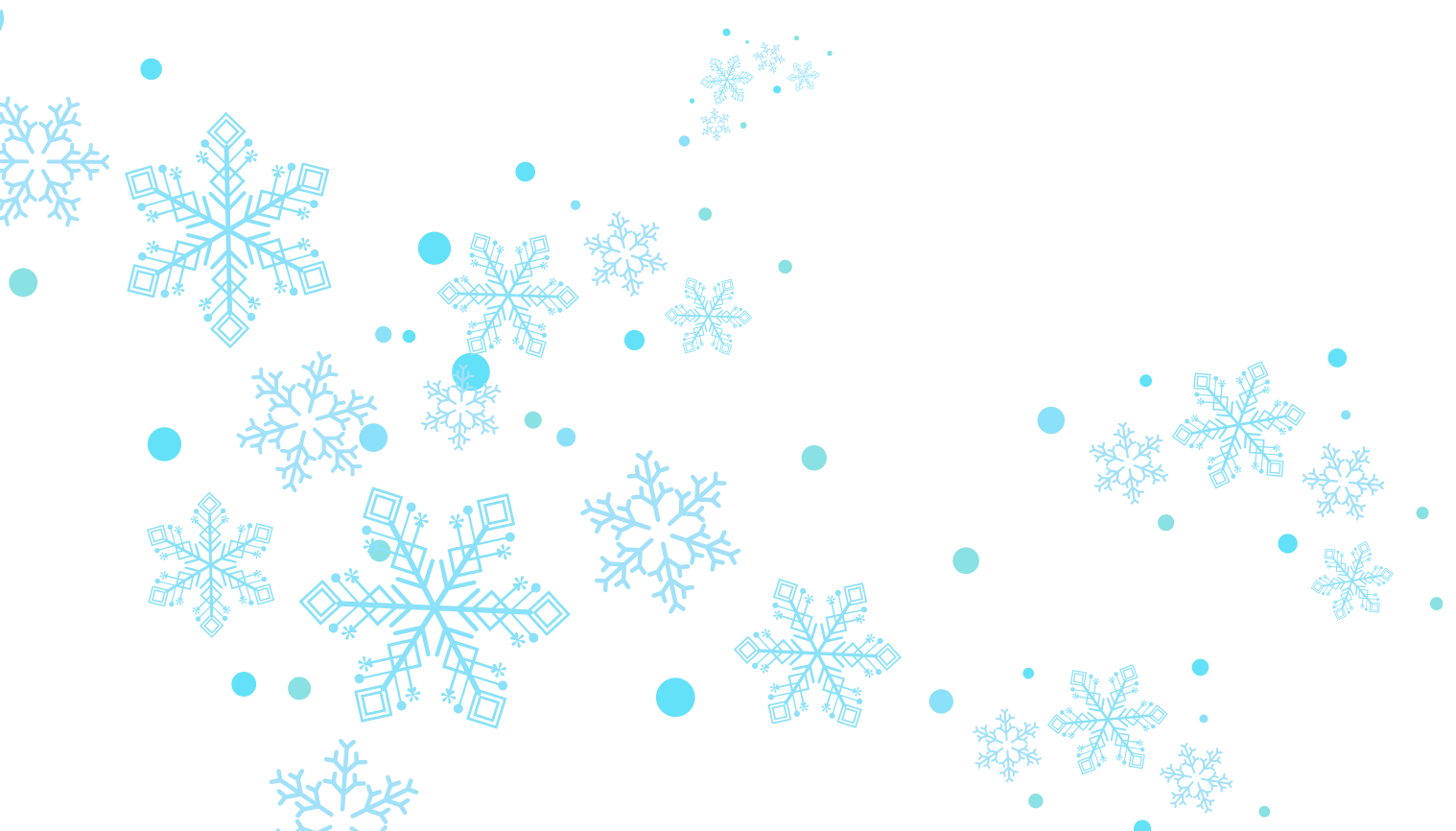


Recommended last order date **3.**

UK warehouse opening times **4.**

Channel Island delivery dates **5.**

Customer care opening times **6.**



Recommended last order date

To make sure your item(s) arrives at your Channel Islands address in time for Christmas, ensure it reaches our UK warehouse **by the 17th December** therefore, please order with your chosen retailer(s) as soon as possible.

We recommend you leave extra time for items which may require two people to carry.

Remember: orders can only be despatched by us to the Channel Islands once paid for – ensure you pay for your order before your item(s) arrive at our UK warehouse to avoid delays.

UK warehouse opening times

Dates and times our UK warehouse is available to receive items from retailers:

Business as usual:

07:00-16:00, Mon-Fri

Apart from:

Tuesday 24th December – 07:00–11:00

Wednesday 25th December – **Closed**

Thursday 26th December – **Closed**

Friday 27th December – 07:00–12:00

Tuesday 31st December – 07:00–12:00

Wednesday 1st January – **Closed**

Channel Island delivery dates

Dates and times our partners in the Channel Islands are out for delivery:

Business as usual:

07:00-17:00, Mon-Fri

Apart from:

Wednesday 25th December – **Closed**

Thursday 26th December – **Closed**

Wednesday 1st January – **Closed**

Customer Care opening times

Contact our Customer Care Team on
customer.service@ship2me.co.uk or call 616 561:

Business as usual:

08:30-17:30, Mon-Fri apart from
09:00-17:30 on Weds
09:00-13:00, Sat

Apart from:

Saturday 30 November – 09:00-14:00

Saturday 7 December – 09:00-14:00

Saturday 14 December – 09:00-14:00

Saturday 21 December – 09:00-14:00

Tuesday 24 December – 08:30-13:00

Wednesday 25 December – **Closed**

Thursday 26 December – **Closed**

Tuesday 31 December – 08:30-13:00

Wednesday 1 January – **Closed**